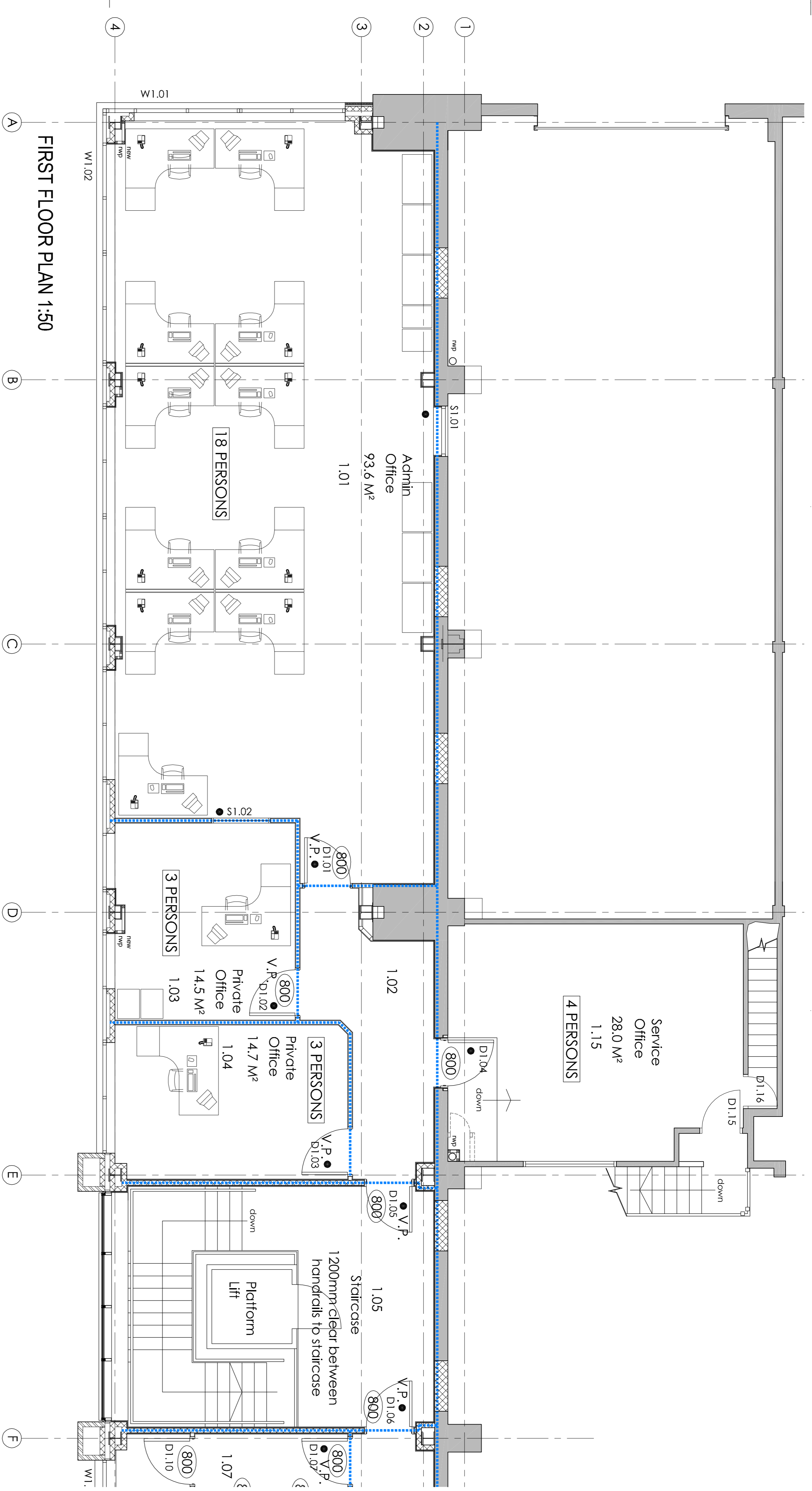
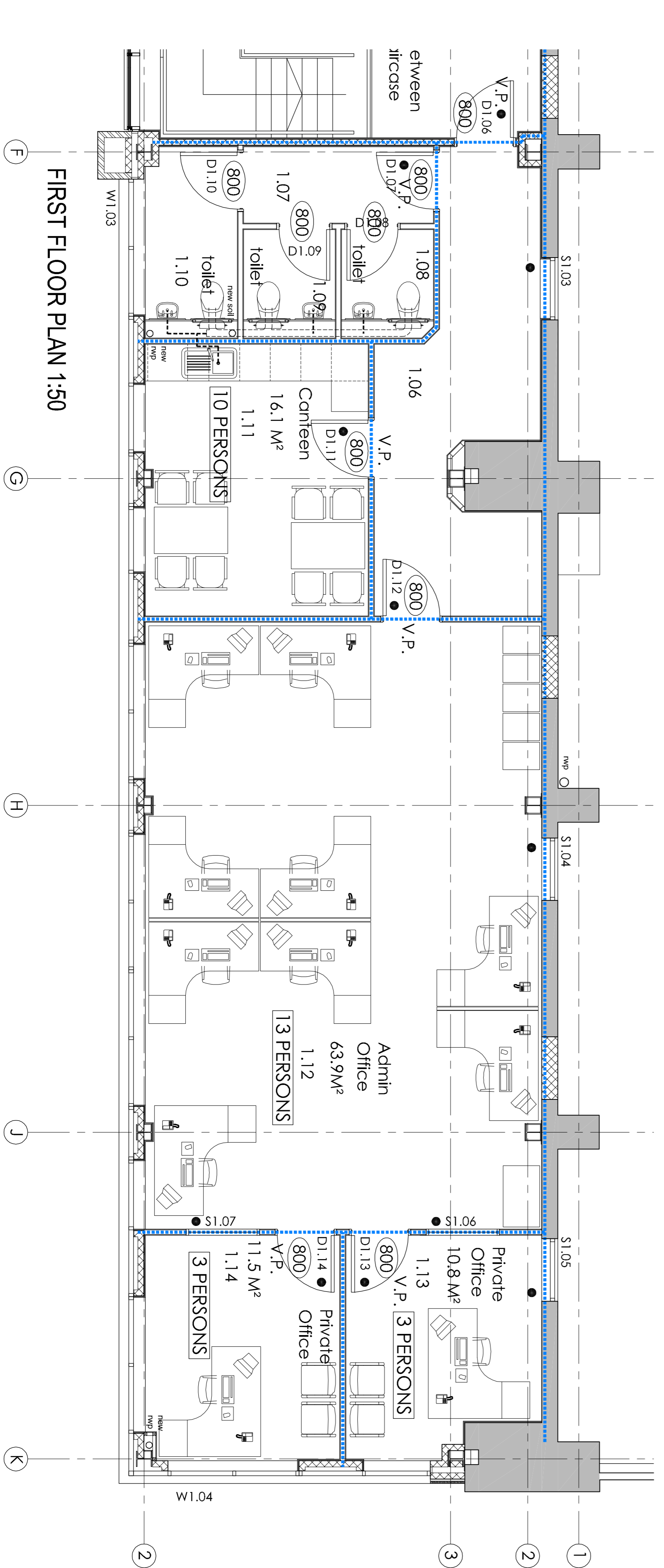


Copyright of this drawing is vested in the Architect and it must not be copied or reproduced without the written consent of the Architect. The Architect's liability is limited to the design and construction of the building and the Architect is not responsible for any other work carried out by other contractors. The Architect is not responsible for any other work carried out by other contractors. The Architect is not responsible for any other work carried out by other contractors. The Architect is not responsible for any other work carried out by other contractors.

Rev	Drawn	Comments	Date
A	DABD	FLOOR PLAN UPDATED	26-06-15
B	SHB	REVISIONS TO FIRE ALARM SYSTEM WALL BETWEEN OFFICES & CHANGED TO 30 MINUTES WITH ALL ASSOCIATED DOORS / WINDOWS. ADDITIONAL INTERNAL STAIRS TO STAIRS 1.03, 1.14	05-08-15
		ADDED	



FIRST FLOOR PLAN 1:50



FIRST FLOOR PLAN 1:50

FIRE KEY	
	INDICATION OF MAXIMUM OCCUPANCY WITHIN ROOM OR AREA (60 PERSONS)
	INDICATION OF CLEAR OPENING WIDTH OF DOORWAY (750MM)
	ONE HOUR FD60S DOORSET OR GLAZED SCREEN GIVING 60 MINUTE FIRE RESISTANCE FOR INTEGRITY.
	HALF HOUR FD30S DOORSET OR GLAZED SCREEN GIVING 30 MINUTE FIRE RESISTANCE FOR INTEGRITY.
	GLAZED VISION PANEL TO ACHIEVE RELEVANT FIRE RESISTANCE OF DOOR.
	HALF HOUR FIRE RESISTANT SEPARATION LINE
	ONE HOUR FIRE RESISTANT COMPARTMENT LINE

Automatic fire alarm system in line with BS 5839-1:2013, with mains supply together with battery back up to be installed to BS5839-1:2013 to be connected via a separate fuse on main distribution board. System Category 13 complete with smoke & heat detectors and electronic sounders incorporating visual alarm beacons & manual break glass points at change of level & final exit points call in accordance with BS EN 54. Fire Alarm installation test certification is required following completion of installation.

Emergency Lighting
Emergency lighting system to be installed in accordance to BS 5266-1:2011 & periodic testing in accordance with BS EN 50172:2004 / BS 5266-8:2004.
Emergency lighting to operate fully automatically in the event of power failure and give illumination of a sufficiently high level to enable all occupants to evacuate the premises safely. Emergency lighting installation test certification is required following completion of installation.

Fire safety & escape signage
Fire Escape signage to identify escape routes in accordance with BS 5499-1:2002 Graphical symbols and signs, including fire safety signs, BS 5499-2:1986 Specification for self-luminous fire safety signs & BS 5499-2:2000: Code of Practice for Escape Route Signage.

Find exit Fire escape door
Doors fitted with electronic security device to fail safe in the UNLOCKED position following activation of fire alarm system and will not to hinder people making their escape.

Manually operated Fire Escape doors to be fitted with panic bar and latch to BS EN 1125:2008 to allow easy exit in the event of fire and must not be locked.
Any security locks fitted to doors to be overridden by the Panic Escape homogeneity or on activation of the alarm system and will not hinder people making their escape.

Hewitt & Carr Architects
The Studio 17A High Street 1, Chichester 1, Stordorshire 1 ST10 1AA
T: 01243 899110 or 01243 82373
E: enquiries@hccarchitects.co.uk
W: www.hccarchitects.co.uk

Client: **Motiva**
Project: **Proposed extension and alterations to existing premises at Clarence Rd, Longton**

Title: **First Floor Fire Strategy & Access Plan**

Status: **Tender**
Date: **April 2015**
Scale: **As/1 1:50**

Project No: **00228 AL(0)31**
Drawing No: **B**

Drawn: **DABD**
Checked: **DABD**